

Courses & Distances
Up Conemaugh River

Robt Wilson

S 37 W 31'

S 2 E 86'

S 16 E 101'

S 47 E 31'

S 70 E 46'

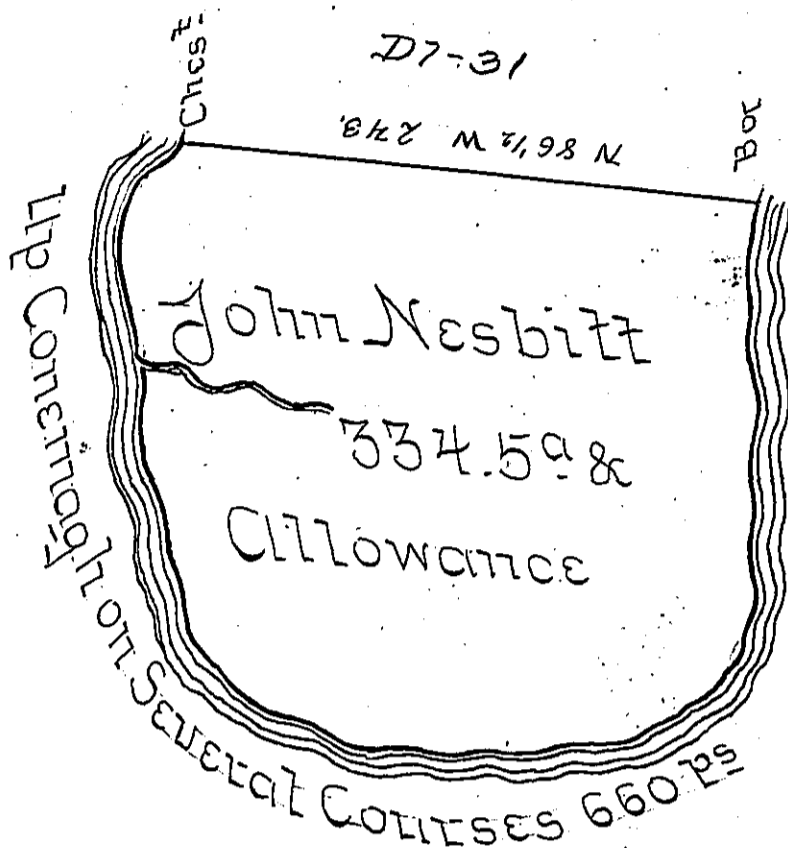
S 87 E 73'

N 75 E 71'

N 29 E 41'

N 1 E 180'

660



Survey'd to John Nesbitt on the 15th day of Oct^r 1785 The above described Tract of three hundred & thirty four Acres & an half acre & allowance of Six Percent Situate on the North side of Conemaugh River Including an Improvement, Bounded by said River on the South and land of Robert Wilson on the North & North West Opposite the mouth of Spruce Run in Armstrong Township Westmoreland County By warrant of the 29th August 1785

Joshua Elder US.

John Culkens Esq^r S^rgent

IN TESTIMONY that the above is a copy of the original remaining on file in the Department of Internal Affairs of Pennsylvania, made conformably to an Act of Assembly approved the 16th day of February, 1833, I have hereunto set my Hand and caused the Seal of said Department to be affixed at Harrisburg, this thirteenth day of March 1906.

Joseph P. ...
Secretary of Internal Affairs.